



DIRECTIVE SYSTEMS

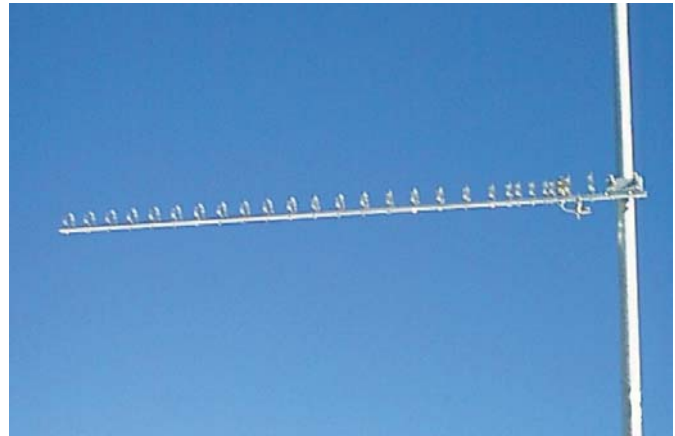
177 DIXON RD.
LEBANON, ME. 04027
TEL: 207-658-7758 FAX: 207-658-4337
www.directive-systems.com

1227LYRM

2.35-2.48 GHz Loop Yagi Model 1227LYRM

SPECIFICATIONS

Frequency range:	2.35 to 2.48GHz
Number of elements:	27
Boom length:	48 inches
Polarization:	Vertical or Horizontal
Boom diameter:	0.5 inch
Mast diameter:	1 1/2 inch max
Weight:	1 pound assembled
Connector:	Type-N female
Gain:	18.5 dBi
3 dB Beamwidth (E plane):	≅ 20 degrees
F/B ratio:	20 dB
Maximum Power:	490 watts average
Stacking distance:	15 inches vertical (H) 16 inches horizontal (E)



ASSEMBLY INSTRUCTIONS

- 1) Unpack the antenna and locate the hardware package. The boom is in one piece and requires no assembly. Observe that the boom to mast bracket is installed on the rear of the boom.
- 2) Attach the boom to mast angle bracket to the boom with the 8-32 x 1" hardware provided. Install the U-Bolt in the angle bracket. Be careful to leave room for the feedline to attach to the connector assembly.
- 3) Attach the feedline and tape it to the bottom of the boom and mast. The connector should be sealed with silicone RTV, butyl rubber, or equivalent.
- 4) Straighten any mis aligned elements and re-tighten if necessary.
- 5) The antenna SWR has been adjusted at the factory for less than 1.4:1 at 2400 MHz. It should be less than 1.5:1 from 2400 to 2485 MHz. Additional tweaking can be accomplished by changing the shape of the driven element slightly and by adjusting the distance between the driven element and R1 and D1. R1 is the reflector closest to the driven element.
- 6) If antennas are to be stacked, see separate sheet "Instructions for Stacking Loop Yagis" which is packed with multiple antenna orders.