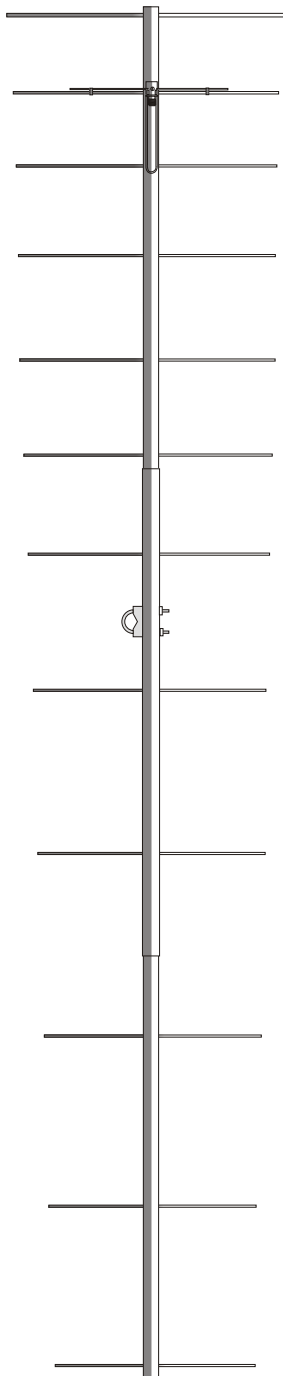




# DIRECTIVE SYSTEMS

177 DIXON ROAD  
LEBANON, ME. 04027

TEL: 207-658-7758 FAX: 207-658-4337



## DSFO144-12 12 ELEMENT 2.5 | K1FO STYLE YAGI ELECTRICAL SPECIFICATIONS

|                                       |                    |
|---------------------------------------|--------------------|
| Frequency range: Mhz .....            | 144-146            |
| Gain: dBd.....                        | 12.6               |
| Impedance: Ohms.....                  | 50                 |
| Connector type .....                  | Type N (F) UG-58/U |
| Front -to- back ratio: dB.....        | 23                 |
| SWR: Typical at resonance.....        | ≅ 1.2:1            |
| Beamwidth: degrees                    |                    |
| E- Plane .....                        | 34                 |
| H- Plane .....                        | 37                 |
| Sidelobe level: degrees               |                    |
| E- Plane .....                        | -19                |
| H- Plane .....                        | -16                |
| Power rating, Continuous: Watts ..... | 1000               |
| Stacking Distance: Ft (m)             |                    |
| E- Plane .....                        | 11' 7" (3.53)      |
| H- Plane .....                        | 10' 8" (3.25)      |

## MECHANICAL SPECIFICATIONS

|                                   |              |
|-----------------------------------|--------------|
| Boom length: Ft (m.) .....        | 17'4" (5.28) |
| Turning radius: Ft. (m.) .....    | 10'4" (3.15) |
| Weight Assembled: Lbs (kg.) ..... | 9.5 (4.32)   |
| Max mast size: In. (cm.) .....    | 2 (5.08)     |
| Wind surface area: Ft (m. ) ..... | 1.5 (.14)    |
| Wind Survival: Mph (km/hr) .....  | 100 (160)    |

## PARTS LIST

|                                     |   |                               |    |
|-------------------------------------|---|-------------------------------|----|
| <b>Boom</b>                         |   | <b>BAG #2</b>                 |    |
| 1 1/4" OD x 0.058 x 72" .....       | 1 | Insulators, element, Delrin®  | 25 |
| " w. coax/ balun assy. attached     | 1 | Keepers, s.s. 3/16"           | 28 |
| 1 3/8" OD x 0.058 x 72" .....       | 1 |                               |    |
| <b>Element bundle</b>               |   | <b>BAG #3</b>                 |    |
| 12 elements w. 2 T-match rods ..... | 1 | U- bolt, s.s. 5/16-18 x 2"    | 2  |
| <b>BAG #1</b>                       |   | U- bolt, s.s. 1/4-20 x 1 1/2" | 2  |
| Hose clamps, stainless steel .....  | 2 | Nut, hex, s.s. 5/16-18        | 4  |
| 8-32 x 1 3/4" machine screws .....  | 2 | Nut, hex, s.s. 1/4-20         | 4  |
| 8-32 s.s. hex nuts .....            | 2 | Lock washer, split s.s. 5/16" | 4  |
| #8 split s.s.lock washers .....     | 2 | Lock washer, split, s.s. 1/4" | 4  |
| Brass T match bars .....            | 2 |                               |    |
|                                     |   | Boom- to Mast Plate           | 1  |
|                                     |   | Assembly instructions         | 1  |