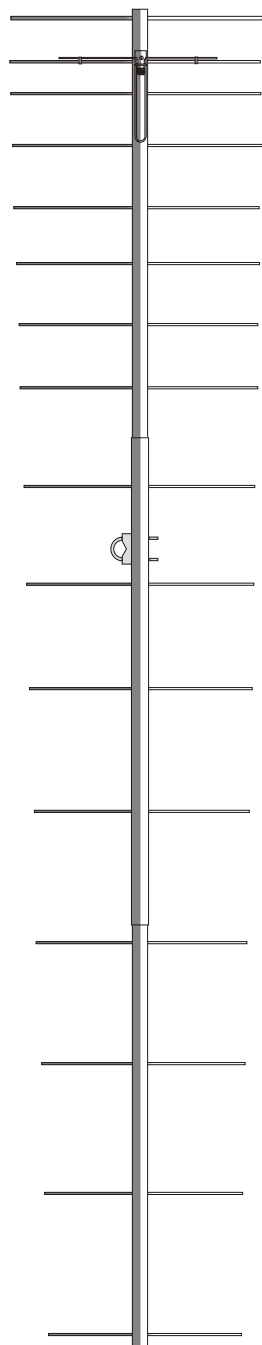




DIRECTIVE SYSTEMS

177 DIXON RD.
 LEBANON, ME. 04027
 TEL: 207-658-7758 FAX: 207-658-4337
 www.directivesystems.com



DSFO222-16

16 ELEMENT 3.9 wl. K1FO STYLE YAGI

ELECTRICAL SPECIFICATIONS

Frequency range: Mhz	222-224
Gain: dBd.....	14.0
Impedance: Ohms.....	50
Connector type	Type N (F) UG-58/U
Front -to- back ratio: dB.....	22
SWR: Typical at resonance.....	≅ 1.2:1
Beamwidth: degrees	
E- Plane	31 °
H- Plane	33 °
Sidelobe level: decibels below main	
E- Plane	-18
H- Plane	-16
Power rating, Continuous: Watts	1000
Stacking Distance: Ft (m)	
E- Plane	8'9" (2.667)
H- Plane	8' (2.438)

MECHANICAL SPECIFICATIONS

Boom length: Ft (m.)	17'4" (5.28)
Turning radius: Ft. (m.)	10'4" (3.15)
Weight Assembled: Lbs (kg.)	9.5 (4.32)
Max mast size: In. (cm.)	2 (5.08)
Wind surface area: Ft (m.)	1.4 (.13)
Wind Survival: Mph (km/hr)	100 (160)

PARTS LIST

Boom		BAG #2	
1 1/4" OD x 0.058 x 72"	1	Insulators, element, Delrin®	34
" w. coax/ balun assy. attached	1	Keepers, s.s. 3/16"	36
1 3/8" OD x 0.058 x 72"	1		
Element bundle		BAG #3	
16 elements w. 2 T-match rods	1	U- bolt, s.s. 5/16-18 x 2"	2
BAG #1		U- bolt, s.s. 1/4-20 x 1 1/2"	2
Hose clamps, stainless steel	2	Nut, hex, s.s. 5/16-18	4
8-32 x 1 3/4" machine screws	2	Nut, hex, s.s. 1/4-20	4
8-32 s.s. hex nuts	2	Lock washer, split s.s. 5/16"	4
#8 split s.s. lock washers	2	Lock washer, split s.s. 1/4"	4
Brass T match bars	2		
		Boom- to Mast Plate	1
		Assembly Instructions	1